

# Autolt Primer

(Introduction to simplest Automation tool)

**Prepared By :**

Jigar Ladhava

Independent Security Researcher

**Prepared For :**

Hcon Groups Meet

January 2014

Groups.Hcon.in



# What is Autolt ?

- Freeware
- Scripting Language
- Designed for automating windows tasks.
- Simulation of keystrokes , Mouse and Windows control/action manipulation.
- Works will all version of Windows.



# Features of Autolt

- Interact with all standard Window Control .
- GUI can be created.
- COM support
- Regexsupport
- Executables(**Aut2Exe**)
- X64 supported
- DLL call and external API support.



# Where to Download ?

- Autoit : <http://www.autoitscript.com/site/autoit/downloads/>
- Autoit Add-ons (Utilities) :  
<http://www.autoitscript.com/site/autoit-script-editor/downloads/>



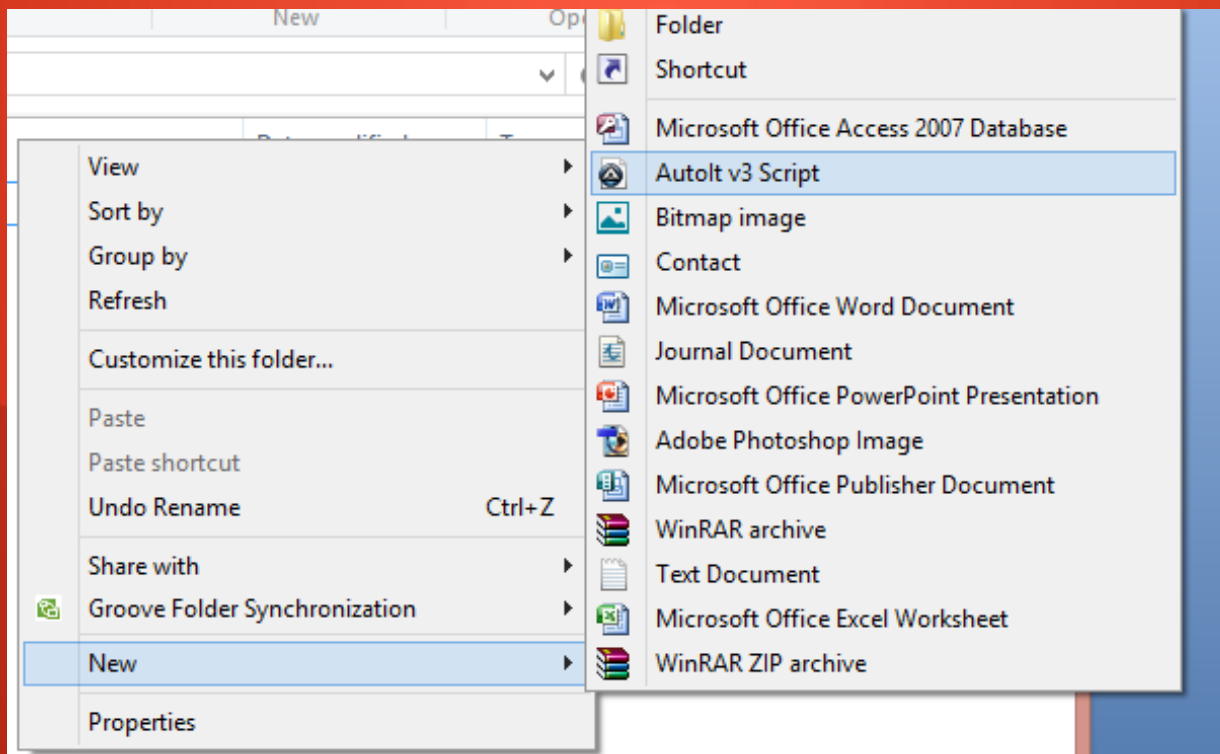
# Autolt

- Programming using only Autolt will little bit more time consuming.
- For easy and time saving programming we can use some utilities of Autolt .
- SciTEforautoit3 is a bunch of utilities which have many utilities you need to use again and again if you code in Autolt.
- So its Better to Install both Autolt+ SciTE .



# Let's Get Started !!

- Right click in “explorer” window and choose New-> Autolt V3 Script.

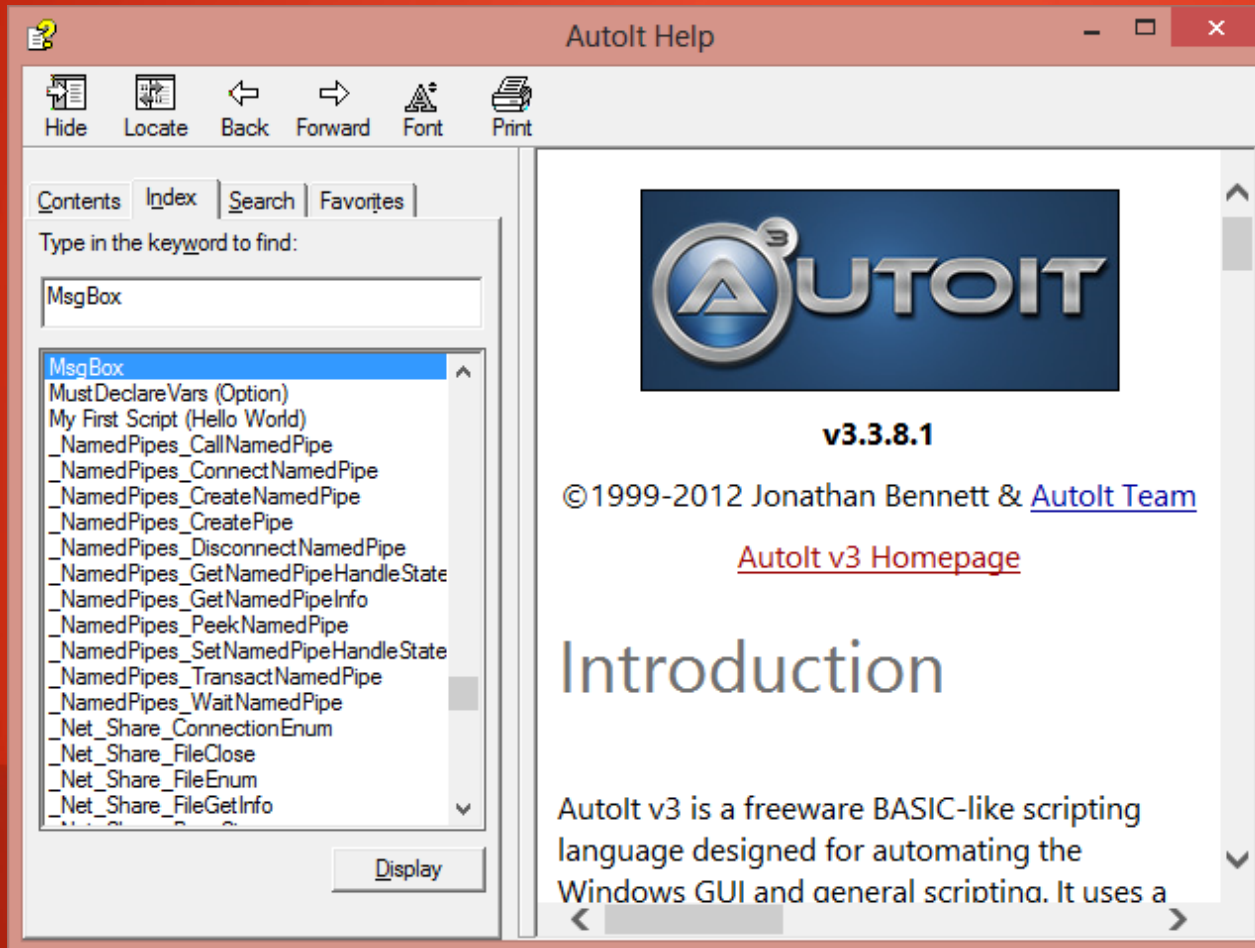


# Functions in Autolt

- As similar as Autolt has its own functions for different tasks.
- All Functions can be found inAutoIHelp File.
- To Access Help File Just Press F1.
- And search for your Function .
- You can have parameters of that function explained in help file.



# First Function (MsgBox)



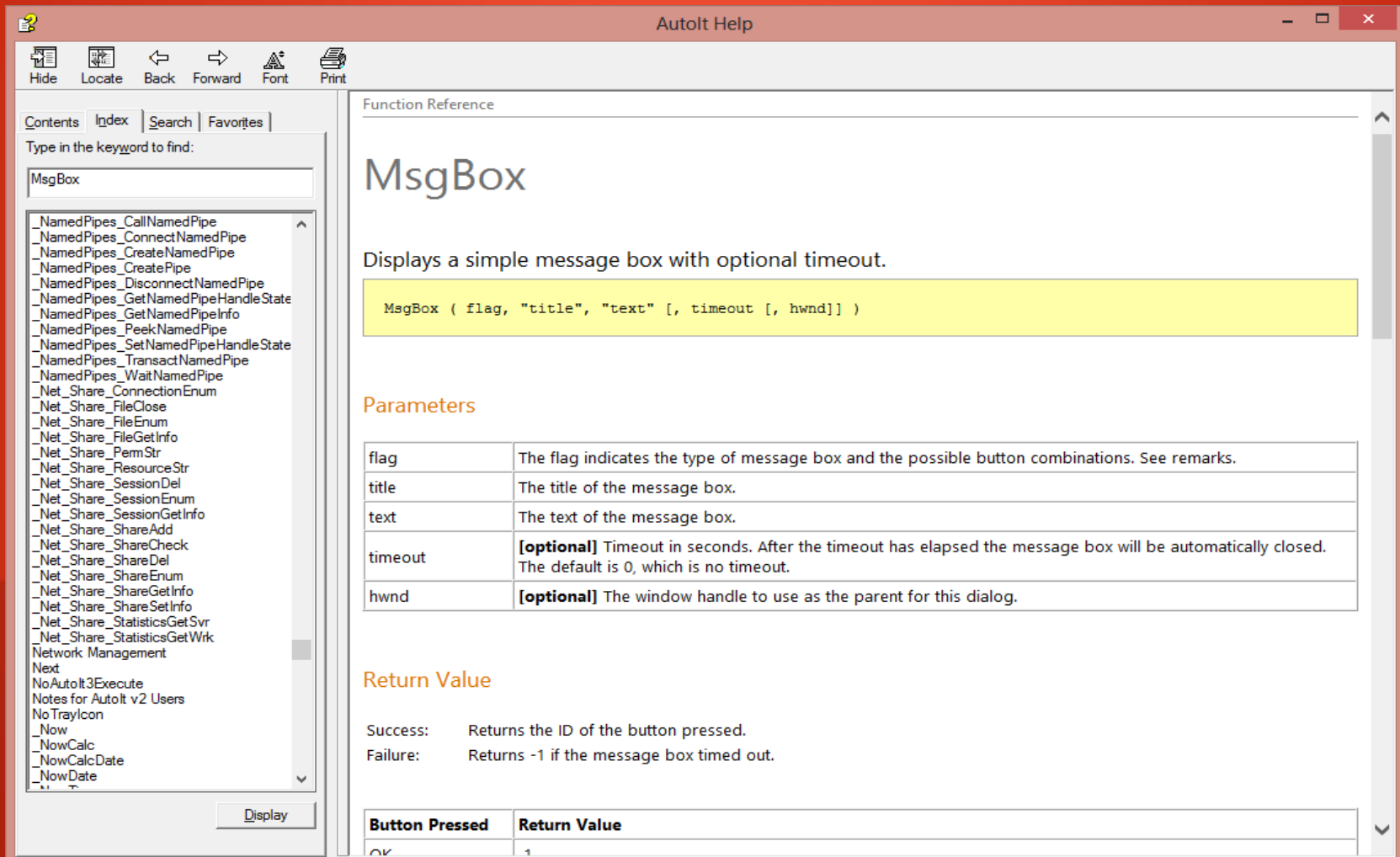
The screenshot shows a window titled "Autolt Help" with a search bar containing "MsgBox". The search results list various functions, with "MsgBox" highlighted. The main content area displays the "Autolt" logo, version "v3.3.8.1", copyright information "©1999-2012 Jonathan Bennett & Autolt Team", a link to the "Autolt v3 Homepage", and the heading "Introduction". The introduction text begins with "Autolt v3 is a freeware BASIC-like scripting language designed for automating the Windows GUI and general scripting. It uses a".

Double Click  
On Function will  
open help page  
of That  
particular  
function.





# First Function (MessageBox)



The screenshot shows the AutoIt Help window with the 'Function Reference' section selected. The search bar contains 'MessageBox'. The left sidebar lists various functions, with 'MessageBox' highlighted. The main content area displays the function signature and description for 'MessageBox'.

Function Reference

## MessageBox

Displays a simple message box with optional timeout.

```
MessageBox ( flag, "title", "text" [, timeout [, hwnd]] )
```

### Parameters

Parameter	Description
flag	The flag indicates the type of message box and the possible button combinations. See remarks.
title	The title of the message box.
text	The text of the message box.
timeout	<b>[optional]</b> Timeout in seconds. After the timeout has elapsed the message box will be automatically closed. The default is 0, which is no timeout.
hwnd	<b>[optional]</b> The window handle to use as the parent for this dialog.

### Return Value

Success: Returns the ID of the button pressed.

Failure: Returns -1 if the message box timed out.

Button Pressed	Return Value
OK	1

# Function and Parameters

## MsgBox

Displays a simple message box with optional timeout.

```
MsgBox (flag, "title", "text" [, timeout [, hwnd]])
```

Function  
Parameters

flag	The flag indicates the type of message box and the possible button combinations. See remarks.
title	The title of the message box.
text	The text of the message box.
timeout	<b>[optional]</b> Timeout in seconds. After the timeout has elapsed the message box will be automatically closed. The default is 0, which is no timeout.
hwnd	<b>[optional]</b> The window handle to use as the parent for this dialog.

### Return Value

Success: Returns the ID of the button pressed.

Failure: Returns -1 if the message box timed out.

Button Pressed	Return Value
OK	1
CANCEL	2
ABORT	3
RETRY	4
IGNORE	5
YES	6
NO	7
TRY AGAIN **	10
CONTINUE **	11

### Remarks

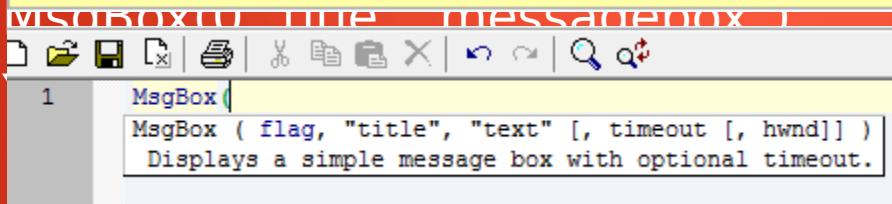
The flag parameter can be a combination of the following values:

decimal flag	Button-related Result	hexadecimal flag
0	OK button	0x0
1	OK and Cancel	0x1
2	Abort, Retry, and Ignore	0x2
3	Yes, No, and Cancel	0x3
4	Yes and No	0x4
5	Retry and Cancel	0x5

# Sample code for MsgBox.

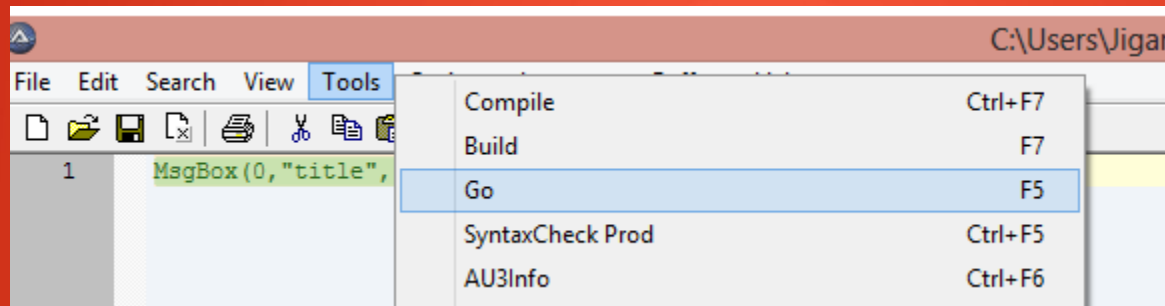
- Using the help index choosing parameters.
- Flag = 0 (for Ok Button)
- “title” and “text”

```
MsgBox ( flag, "title", "text" [, timeout [, hwnd]] )
```

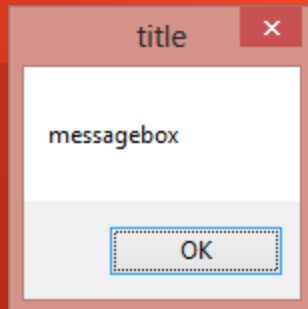


# Run The code.

- To Run the code simply Go->Run , or press F5.



- Output :



# Run The Code

- In this way you can simply program in Autolt.
- You can Use Various Function available in Help reference as per your requirement.



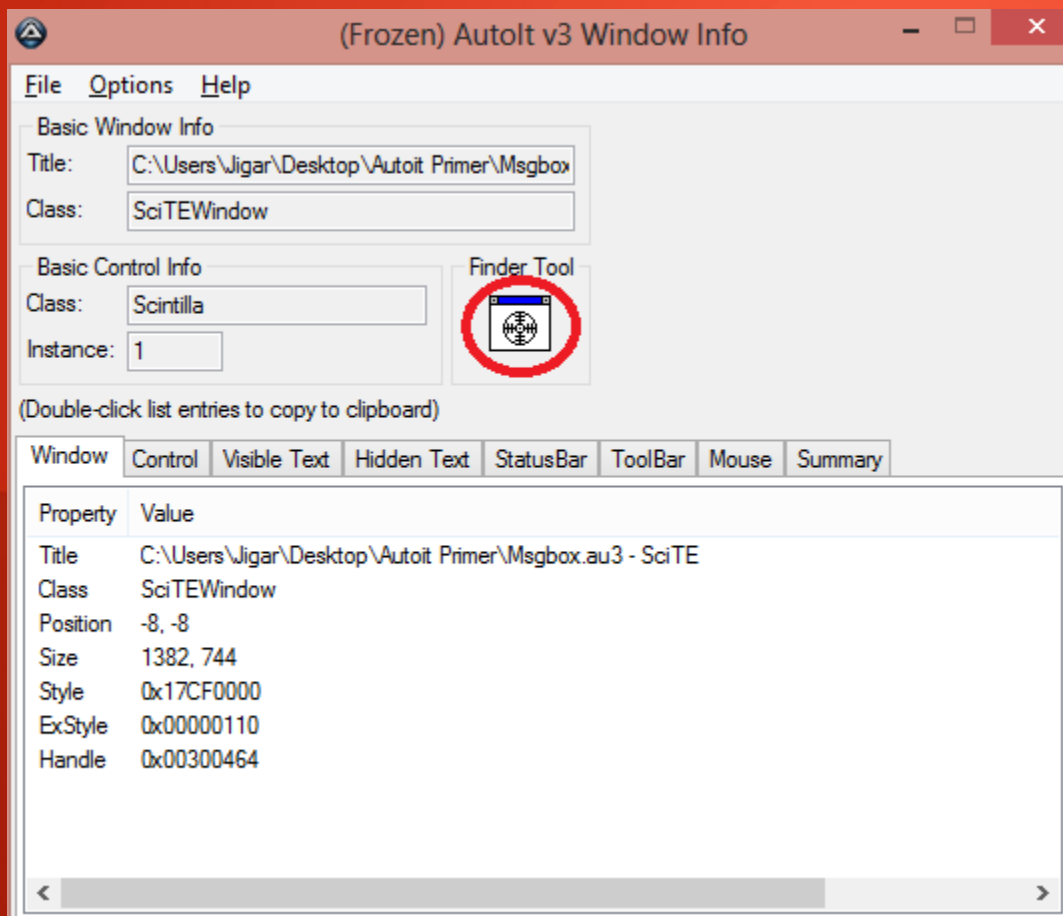
# Utilities for Autoit

- Various Utilities For Autoit is available
- SciTE is Bunch of useful utilities.
- AU3info
- AU3recorder
- Form designer (Koda)
- GUI designer
- And Many more...



# AU3info

- You can launch AU3info , From Tools menu of editor.



- Drag and Drop The Finder Tool to the window of which you want Information.
- This Information can be used to window interfacing in AutoIt.



# AU3recorder

- Using AU3recorder you can record action like mouse clicks ,keyboard strokes , and window controls.
- Using AU3recorder you can have the ready made code for your action which was recorded.
- It can be launched From Tools menu of Autolt editor.





# Koda Form Designer

- Using Koda Form designer you can design The GUI form/window for your Tool.
- You can export your code in a format ,which you can use in AutoIt editor.
- I have codedAutoClickerusingAutoITand GUI with The help of Koda Form Designer.



# My Tool Using AutoIt



# Thanxs..

- A warm Thanxs And Credits to ,
  - MY MOM , MY DAD
  - AshishMistry..
- 
- END...

